

GV-EBL1100 Series 1.3MP H.264 Low Lux WDR IR Bullet IP Camera



- 1/3" progressive scan low lux CMOS
- Dual streams from H.264 and MJPEG
- Up to 30 fps at 1280 x 1024
- Intelligent IR
- Day and Night function (with removable IR-cut filter)
- Wide Dynamic Range (WDR)
- Defog
- Vandal resistance (IK10 for metal casing)
- Ingress protection (IP67)
- Motion detection
- Tampering alarm
- Text overlay
- Privacy mask
- IP address filtering
- DC 12V / PoE
- Megapixel lens
- Supports iPhone, iPad, Android & 3GPP
- 31 languages on Web interface
- ONVIF (Profile S) conformant

Introduction

The Target Bullet Camera is a light-weighted cameras designed for outdoor environments. It adheres to the IP67 standard and has full protection against dust and jets of water. The camera offers an entry-level surveillance solution with all the essential features and excellent image quality.

Models

| Model | Iris | Focal Length (mm) | Maximum Aperture | Image Format |
|---------------|-------|-------------------|------------------|--------------|
| GV-EBL1100-0F | Fixed | 3.6 | F/1.8 | 1/2.7" |
| GV-EBL1100-1F | Fixed | 6 | F/1.8 | 1/2.7" |

Active Tampering Alarm

Tampered



Focus Change



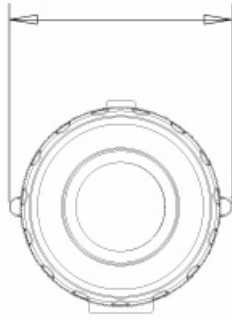
Camera Shift



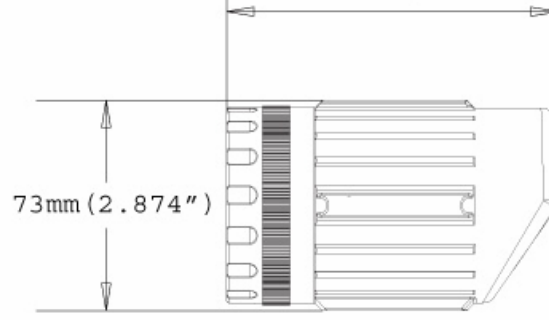
Overview

Dimensions

76.6mm (3.016")



115.14mm (4.533")



Panel



Specifications

| Camera | | GV-EBL1100-0F | GV-EBL1100-1F |
|-------------------------|-----------|--|---------------|
| Image Sensor | | 1/3" progressive scan low lux CMOS | |
| Picture Elements | | 1280 (H) x 1024 (V) | |
| Minimum Illumination | Color | 0.05 Lux | |
| | B/W | 0.03 Lux | |
| | IR ON | 0 Lux | |
| Shutter Speed | | Automatic, Manual (1/5 ~ 1/8000 sec.) | |
| White Balance | | Automatic, Manual (2800K ~ 8500K) | |
| Gain Control | | Automatic | |
| S/N Ratio | | 50 dB | |
| WDR | | Yes | |
| Lens | | | |
| Megapixel | | Yes | |
| Day/Night | | Yes (with removable IR-cut filter) | |
| Lens Type | | Fixed | |
| Focal Length | | 3.6 mm | 6 mm |
| Maximum Aperture | | F/1.8 | |
| Mount | | M12, Pitch 0.5 mm | |
| Horizontal FOV | | 72° | 44° |
| Image Format | | 1/2.7" | |
| Operation | Focus | Fixed | |
| | Zoom | Fixed | |
| | Iris | Fixed | |
| IR LED Quantity | | 24 IR LEDs | |
| Max. IR Distance | | 30 m (98.4 ft.) | |
| Operation | | | |
| Video Compression | | H.264, MJPEG | |
| Video Stream | | Dual streams from H.264 and MJPEG | |
| Frame Rate | | 30 fps at 1280 x 1024 *The frame rate and the performance may vary depending on the number of connections and data bitrates (different scenes). | |
| Image Setting | | Brightness, Contrast, Saturation, Sharpness, Gamma, White Balance, Flicker-less, Image Orientation, Shutter Speed, D/N Sensitivity, Backlight Compensation, WDR, Defog | |
| Audio Support | | No | |
| Video Resolution | | | |
| Main Stream | 4 : 3 | 1280 x 960, 640 x 480, 320 x 240 | |
| | 16 : 9 | 1280 x 720, 640 x 360, 448 x 252 | |
| | 5 : 4 | 1280 x 1024, 640 x 512, 320 x 256 | |
| Sub Stream | 4 : 3 | 640 x 480, 320 x 240 | |
| | 16 : 9 | 640 x 360, 448 x 252 | |
| | 5 : 4 | 640 x 512, 320 x 256 | |
| Network | | | |
| Interface | | 10/100 Ethernet | |
| Protocol | | DHCP, DynDNS, FTP, HTTP, HTTPS, NTP, ONVIF (Profile S), QoS (DSCP), RTSP, SNMP, SMTP, TCP, UDP, UPnP, 3GPP/ISMA | |
| Mechanical | | | |
| Connectors | Power | 2-pin terminal block, PoE | |
| | Ethernet | Ethernet (10/100 Base-T), RJ-45 cable | |
| General | | | |
| Environment Temperature | Start-up | -20°C ~ 50°C (-4°F ~ 122°F) | |
| | Operation | -30°C ~ 50°C (-22°F ~ 122°F) | |
| Humidity | | 10% to 90% (no condensation) | |
| Power Source | | 12V DC / PoE | |
| Max. Power Consumption | | 7.8 W | |
| Dimensions | | 115 x 76 x 73 mm (4.5" x 3.0" x 2.9") | |
| Weight | | 547 g (1.20 lb) | |
| Ingress Protection | | IP67 | |
| Vandal Resistance | | IK10 for metal casing | |
| Regulatory | | CE, FCC, C-Tick, RCM, RoHS compliant | |

| Power over Ethernet | |
|-------------------------|--|
| PoE Standard | IEEE 802.3af Power over Ethernet / PD |
| PoE Power Supply Type | End-Span |
| PoE Power Output | Per Port 48V DC, 350mA. Max. 15.4 watts |
| Web Interface | |
| Installation Management | Web-based configuration |
| Maintenance | Firmware upgrade through Web Browser or Utility |
| Access from Web Browser | Camera Live View, Video Recording, Change Video Quality, Bandwidth Control, Image Snapshot, Picture in Picture, Picture and Picture, Privacy Mask, Tampering Alarm, Text Overlay, Digital PTZ |
| Language | Arabic / Bulgarian / Czech / Danish / Dutch / English / Finnish / French / German / Greek / Hebrew / Hungarian / Indonesian / Italian / Japanese / Lithuanian / Norwegian / Persian / Polish / Portuguese / Romanian / Russian / Serbian / Simplified Chinese / Slovakian / Slovenian / Spanish / Swedish / Thai / Traditional Chinese / Turkish |
| Application | |
| Network Storage | GV-NVR, GV-System, GV-Recording Server |
| Smart Device Access | GV-Eye for Android smartphone, tablet, iPhone and iPod Touch GV-Eye HD for iPad |
| Live Viewing | IE, mobile phone |
| CMS Server support | GV-Control Center, GV-Center V2, GV-VSM |


Note:

1. The signal range and data throughput may vary depending on the network conditions and environmental factors.
2. Specifications are subject to change without notice.

Packing List

- | | |
|-------------------------|-------------------------------------|
| 1. Target Bullet Camera | 6. Screw anchor x 3 |
| 2. Sun-Shield Cover | 7. GV-IPCAM H.264 Quick Start Guide |
| 3. Silica Gel Bag x 2 | 8. GV-IPCAM H.264 Software CD |
| 4. Supporting Rack | 9. GV-NVR Quick Start Guide |
| 5. Screw x 4 | 10. GV-NVR Software DVD |

Accessories

| Name | Details |
|---|--|
|  <p>GV-PA191 PoE Adapter</p> | <p>Weight: 130 g (0.29 lb) Dimensions (H x W x D): 43 x 69 x 40 mm (1.69" x 2.72" x 1.57")</p> |
| Power Adapter | Power adapters are available in 4 regions: U.S.A., Australia, U.K and Europe. |
| GV-POE Switch | The GV-POE Switch is designed to provide power along with network connection for IP devices. The GV-POE Switch is available in various models with different numbers and types of ports. |